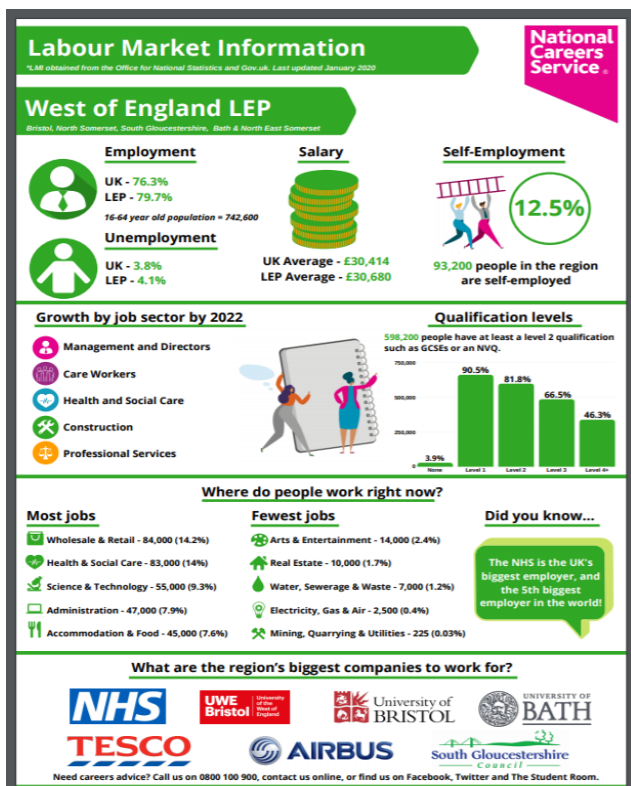


## What Is Labour Market Information (LMI) and How to use it?

Good quality Labour Market Information (LMI) can help a young person make career decisions and plan their future. In a rapidly changing local, UK and global jobs market young people can no longer solely rely upon the experiences and advice of their family and friends.

LMI in relation to careers generally includes, information on general employment trends, data on what jobs exists, how many and in which sectors and job types, information on the demand for skill, the supply and where current and future skills gaps and shortages might exist and what job progression opportunities are available.

This is an example of what LMI would look like.



Careerometer is an app that can be used to explore current LMI around the industries of interest. You can compare three job roles of your choice, which will show you regional employment rates, salary details, working hours and more.

(Installing it on the website, use this link. We would like the 3 cards.)

<https://www.lmiforall.org.uk/widget/>